

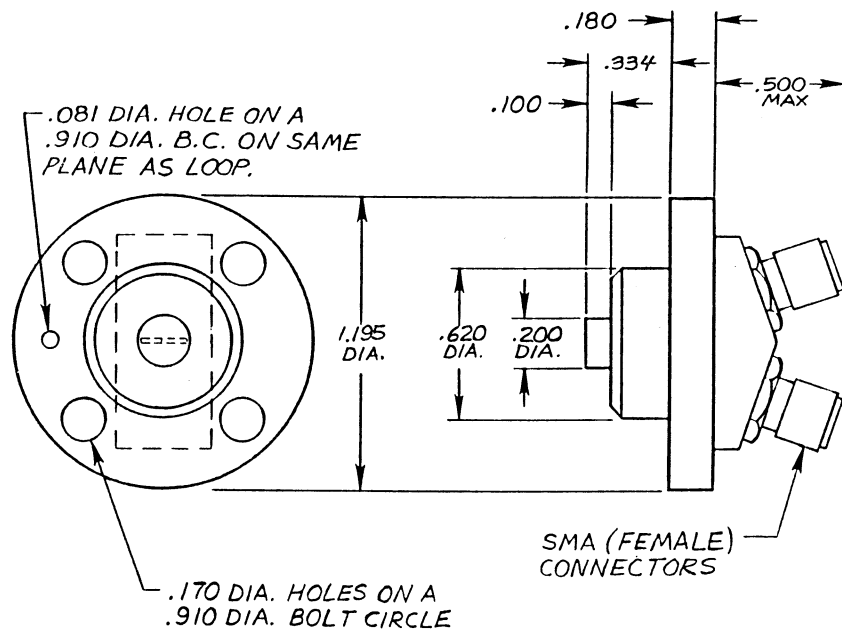
## MODEL B-15

### B-Dot Current Probe

The B-15 B-Dot current probe was designed to measure current in an intense radiation field (up to 300 K rad). The B-15 has two identical loops with opposite polarity to allow signals to be added, thus providing common-mode rejection capability. Accuracy in manufacturing produces consistent results of greater than  $\pm 5\%$ .

#### Specifications

Equivalent Area (Fringing Field - nom.)	$1.7 \times 10^{-6} \text{ m}^2$
Frequency Response	$>500\text{MHz}$
Maximum Output	$>400 \text{ Volts}$
Mass	43g



Note: Other body styles with different hole patterns are available. Please ask for details.